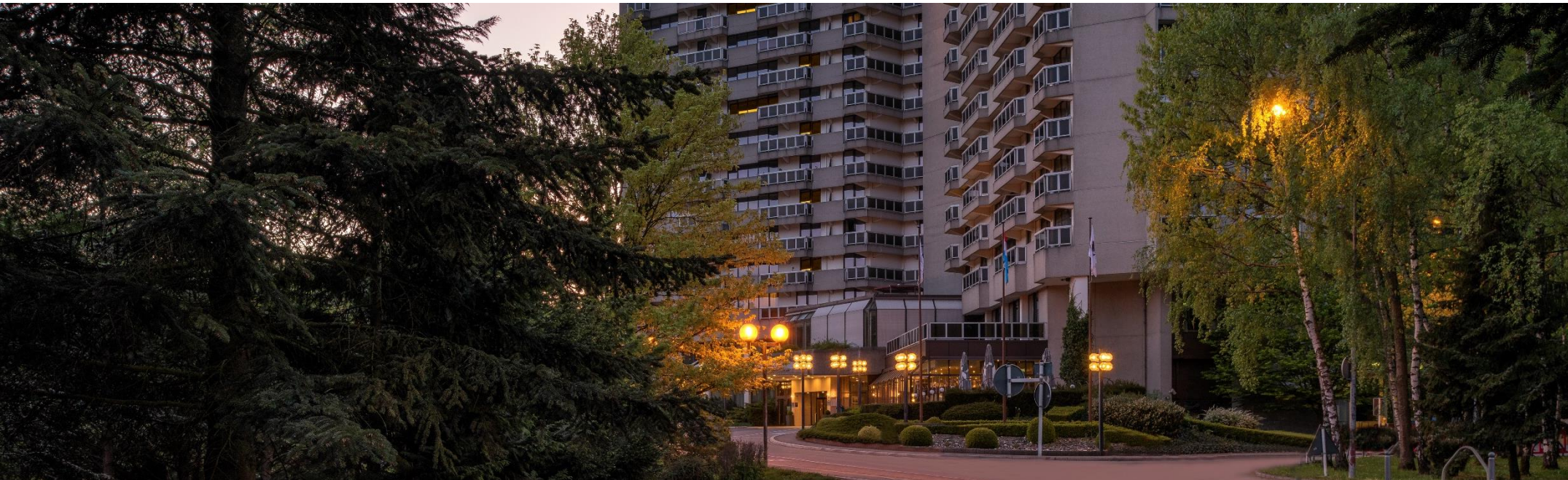


# DoubleTree

*By Hilton Luxembourg*



# Ideal Location Beautiful Surroundings

Located close to the main motorways, on a wooded hillside, the hotel is within easy access of the European and financial districts.

10 minutes drive from the Kirchberg Quarter as well as LUX airport and just 7 from the Luxembourg City Centre.



# In a nutshell

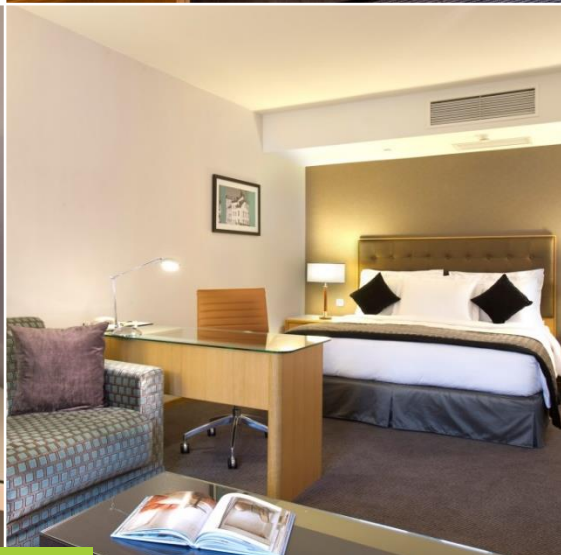
## 345 Rooms

- 105 Standard rooms
- 132 Superior rooms
- 51 Deluxe rooms
- 23 Junior Suites
- 10 Deluxe Suite
- 24 Deluxe Suite/Kitchenette

LARGE CONVENTION CENTER (1200M <sup>2</sup> )	ALL DAY DINING AT THE "THE GREEN" RESTAURANT AND BAR
250 PARKING SPACES	COMPLIMENTARY INDOOR SWIMMING POOL AND GYM
COMPLIMENTARY INTERNET ACCESS	



# Standard, Superior and Deluxe Rooms



# Junior and Deluxe Suites



Royaume Uni 1st floor



Ballroom Europe -2nd floor



# Meeting Spaces

Panoramique 3  
19th floor



Luxembourg 1st floor





*Ballroom Europe-2nd floor*



*Ballroom Europe-2nd floor*

# Dining Spaces



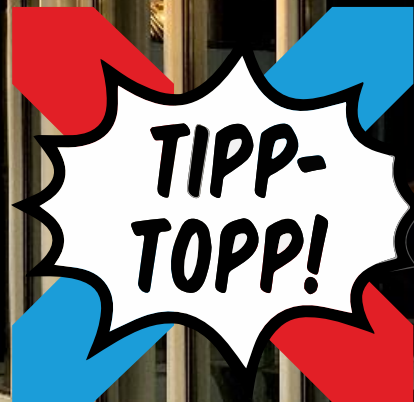
*Panoramique 1-2  
19th floor*



*Espace les Continents 1st floor*



## Special Events







# Special Events




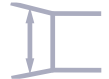









[ABOUT HOTEL](#)

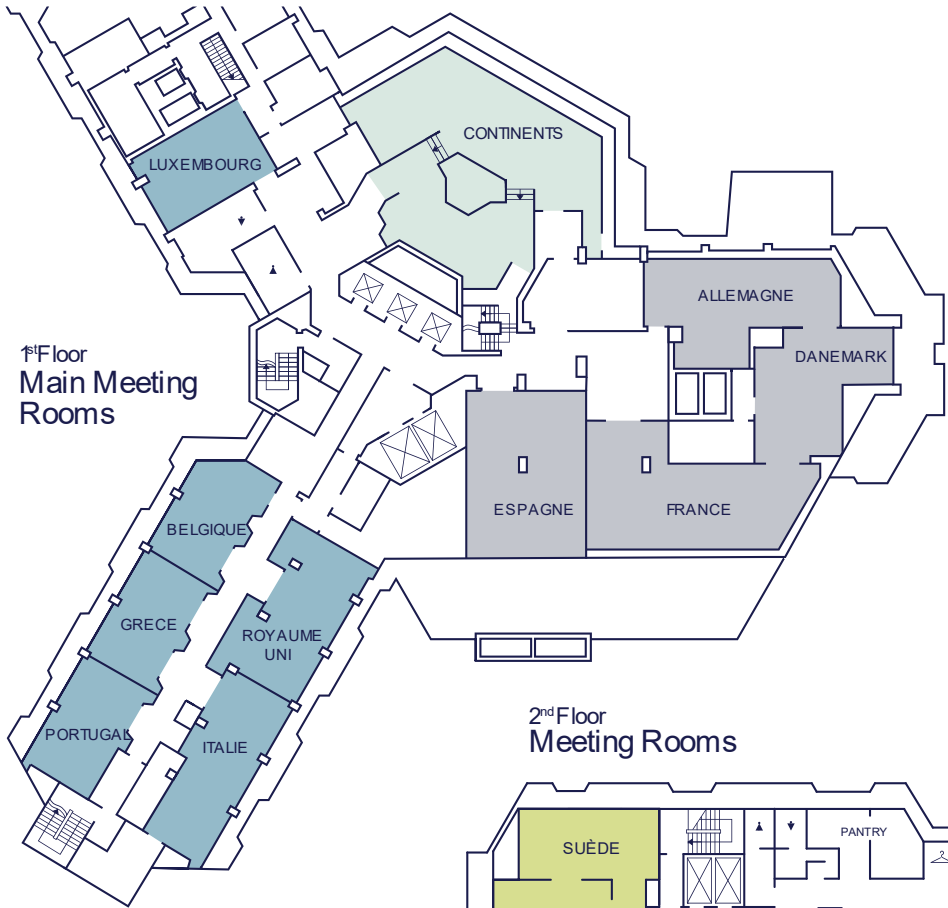
[MEETING FACILITIES](#)

[DINING SPACES](#)

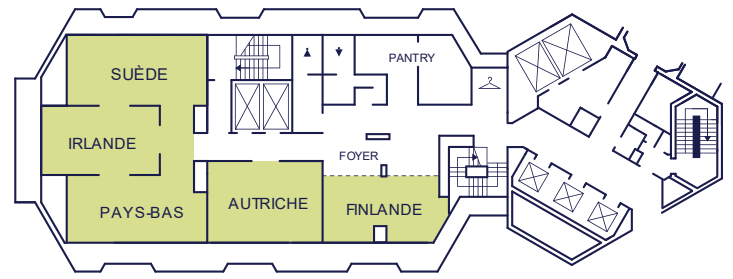
[ROOMS](#)



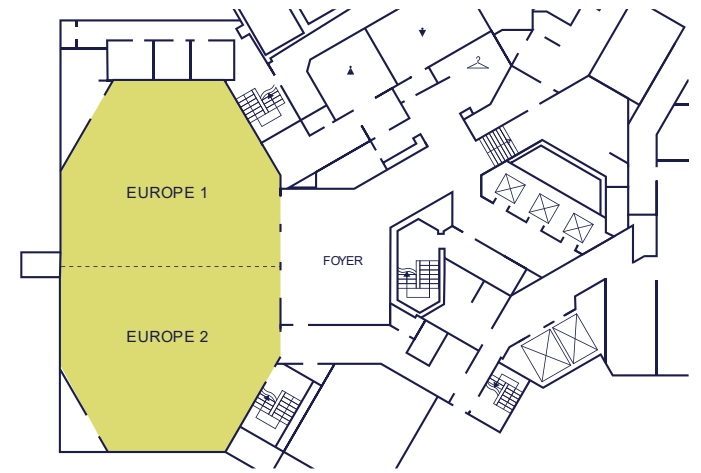
Name of Room	Floor	Total Sq. Meters	Dimensions 	Ceiling Ht. 	Boardroom 	Cabaret 	Classroom 	Theatre 	U Shape 	Buffet + Dance 	Buffet 	Lunch or Dinner 	Cocktail 
Europe	-2	290	12m/27m	3m65	69	128	144	300	45	176	198	220	300
Europe 1	-2	145	12m/13m	3m65	33	56	60	120	30	44	55	77	120
Europe 2	-2	145	12m/13m	3m65	33	56	60	120	30	44	55	77	120
Luxembourg	1	40.30	5m30/7m60	3m	11	-	-	-	-	-	-	-	-
Belgique	1	23.00	4m40/5m30	3m	8	8	9	12	9	-	-	11	12
Grèce	1	32.60	4m40/7m45	3m	14	8	15	20	15	-	-	22	20
Portugal	1	32.90	4m30/7m65	3m	14	8	15	20	15	-	-	22	20
Grèce, Portugal	1	65.00	4m30/15m10	3m	32	24	33	50	33	-	33	44	50
Italie	1	53.00	5m/11m60	2m80	26	24	21	40	27	-	22	33	40
Royaume Uni	1	53.00	6m/8m80	2m80	20	16	18	30	21	-	11	22	30
Espagne	1	79.50	7m50/10m60	2m80	15	32	36	60	12	-	33	55	80
France	1	83.70	5m60/15m	2m80	32	32	54	80	35	-	33	55	80
Danemark	1	26.70	3m10/8m60	2m80	14	16	18	30	15	-	22	33	40
Allemagne	1	40.20	4m10/9m80	2m80	26	24	24	50	27	-	33	44	60
Continents	1	50/145	-	2m55/3m20	-	-	-	-	-	33	33	44	100
Finlande	2	26.20	3m70/7m	2m50	14	8	12	20	15	-	-	11	20
Autriche	2	32.00	6m20/5m10	2m50	14	8	12	20	15	-	-	11	20
Pays-Bas	2	32.70	3m80/8m50	2m50	20	16	12	24	21	-	-	22	24
Irlande	2	26.20	7m/3m75	2m50	8	8	12	20	9	-	-	11	20
Suède	2	32.80	3m90/8m50	2m50	20	16	12	24	21	-	-	22	24
Panoramique 1,2	19	99	9m/11m	3m	33	40	60	100	35	44	55	88	100
Panoramique 3	19	90	8m10/13m15	3m	27	24	30	70	27	22	33	44	70



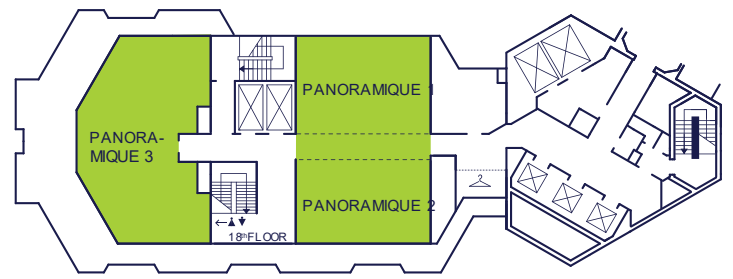
2<sup>nd</sup> Floor Meeting Rooms



-2<sup>nd</sup> Floor  
The Ballroom Salon Europe



19<sup>th</sup> Floor  
The Panoramique





DOUBLE TREE  
by Hilton™  
LUXEMBOURG

# Why not Make Luxembourg Your wild card?

The only Grand-Duchy in the World

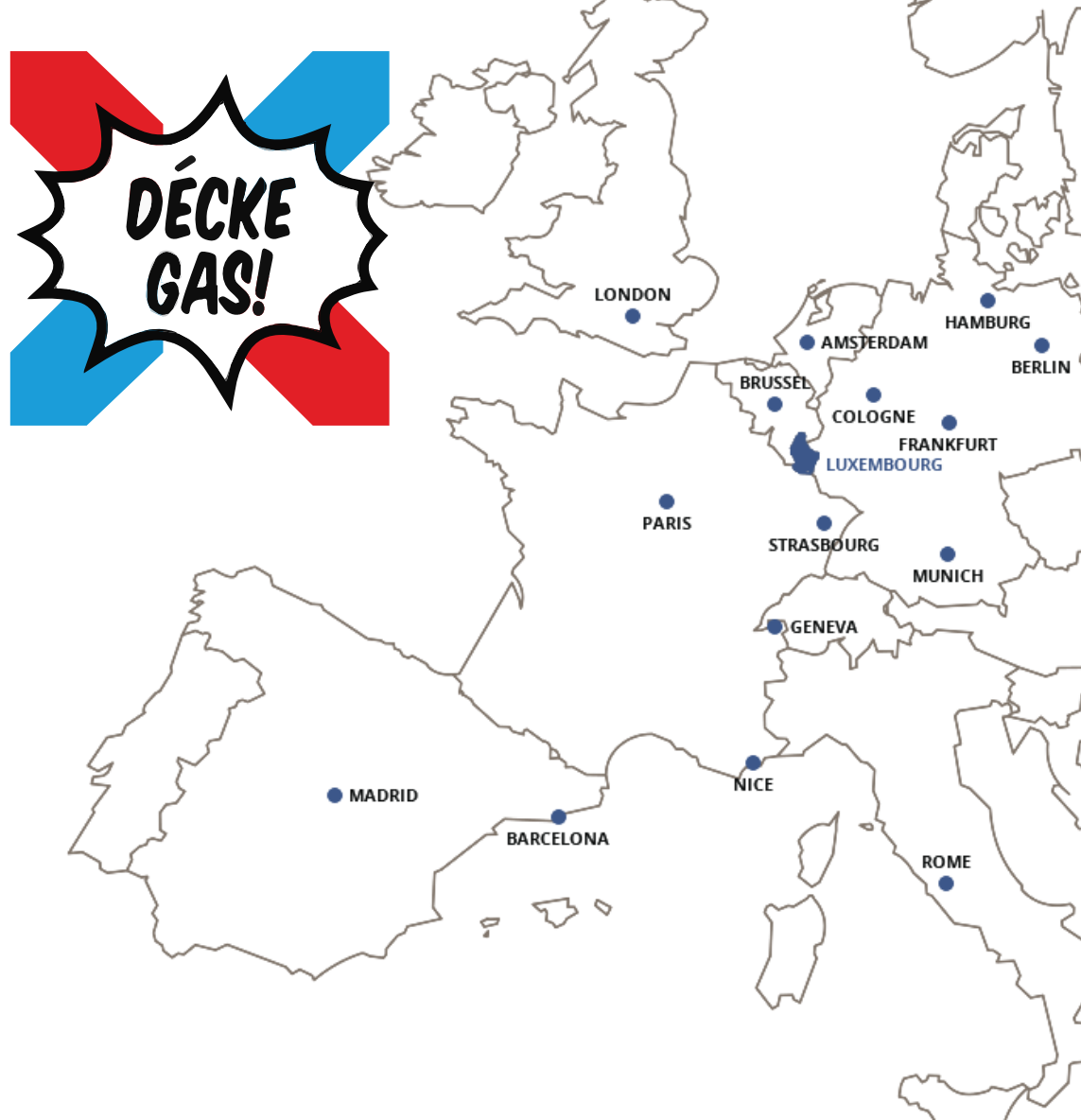
---



  
VISIT  
LUXEMBOURG

# Location, Location, Location

Strategically located in the heart of Europe, the Grand Duchy of Luxembourg is accessible from all major **European hubs** in under 2h30'



## Easy accessible destinations:

Amsterdam		1h30'	Milan		1h10'
Barcelona		2h25'	Munich		1h10'
Berlin		1h20'	Nice		1h20'
Brussels		2h00'	Paris		2h05'
Cologne		2h30'			1h00'
Copenhagen		1h45'	Porto		2h25'
Dublin		1h20'	Rome		1h50'
Geneva		1h05'	Sarrebruck		1h20'
Frankfurt		0h50'	Strasbourg		2h10'
Geneva		0h55'	Stockholm		2h40'
Hamburg		1h55'	Venice		1h35'
London		1h55'	Vienna		1h50'
Madrid		2h20'	Warsaw		1h55'
Manchester		1h50'	Zurich		0h55'

# Free Public Transportation

Luxembourg is proud to be the first country in the world to offer nationwide free public transportation.

#MOBILITÉ  
#GRATUITE  
AU LUXEMBOURG

*Since 01<sup>st</sup> March 2020*



**TRAINS, TRAMS AND BUSES**



  
**VISIT  
LUXEMBOURG**



  
**VISIT  
LUXEMBOURG**



# Unique In Luxembourg



Only Grand Duchy in the World

Moselle Wine Route, famous for its Crémant

Possibility to rent a City of Clervaux

Bock Casemates - a UNESCO world heritage site

Kirchberg Plateau:  
The Business and Financial district.  
A real gallery of open air contemporary architecture, designed and constructed by a series of renowned architects.



Little Switzerland

1 castle per every 20km<sup>2</sup>, a total of 130

Highest density of 'Leading Quality Trails – Best of Europe'

Luxembourg's old town - a UNESCO world heritage site

## *Multicultural*

Luxembourg is a land of meeting and exchange with more than 150 nationalities represented. French, German and English are widely spoken.

## *Hassle-Free*

Its hotels, its tourist attractions and business centre are within easy reach from one another; a major advantage for MICE organisers. The costs and loss of time, associated with lengthy journeys are not on the agenda.

## *Safe*

For years Luxembourg has been recognised as one of the safest capital cities in the world. In choosing Luxembourg, you'll have one worry less on your agenda.

## *Fascinating*

From the vine-growing slopes of the Moselle Valley to the rugged hilltops of the Ardennes, via the famous Land of the Red Rock, the rocky outcrops of Luxembourg's "Little Switzerland" or the verdant Gutland at the heart of which nestles the city of Luxembourg: the country offers a multitude of sumptuous landscapes.

## *Green*

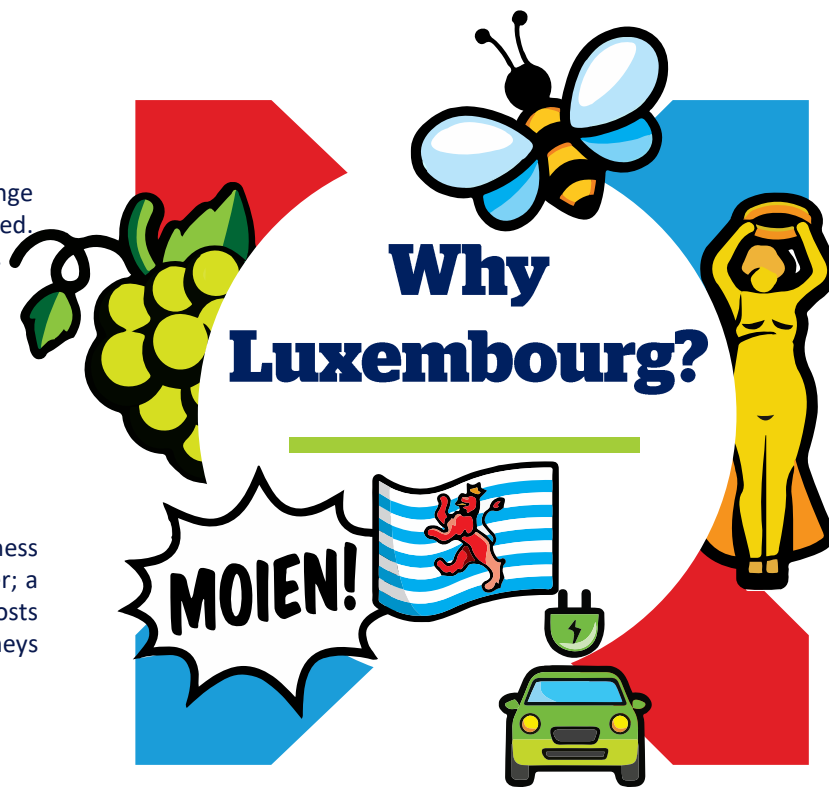
Luxembourg is surrounded by forests and nature which have proven to enhance focus and facilitate brainstorming amongst others. A benefit that is key for all types of meetings.

## *Gourmet*

Luxembourg is the country with the highest number of starred restaurants per capita worldwide. It offers you a culinary panorama of extraordinary diversity. Famous for its wine and sparkling wine (Crémant) from the Moselle Valley, Luxembourg also brews its own beer!

## *Movie like*

Built around a 1000 year old fortress, the diversity of its architecture transports you through different eras. Its quaint and charming cobbled streets are worthy of a movie set.



**Any Questions ?**

